



Snowdrops on Sandy Lane, Brownlow near the Common Land.

Website:

<http://astbury-parish.org.uk>

email: clerk@astbury-parish.org.uk

Newbold Astbury
cum Moreton
Annual Parish Council Newsletter

March 2023

Annual Parishes Meeting 12th. April

Annual Parish Council Meeting for election of Officers etc. May 10th.

General Parish Council Meetings the second Wednesday of the month

Parish Council Elections Thursday May 4th. 2023

MAKE A CHANGE, BECOME A LOCAL COUNCILLOR

Newbold Astbury cum Moreton Parish Council is calling on residents, passionate about their community to stand in the local elections in 2023.

What do councillors do?

Councillors are the champions of their community and give residents a voice on the decisions the council makes. Becoming a councillor will allow you to make a real difference in your community by engaging with residents, local groups and businesses to find out their needs; making decisions on which services and projects the council should take forward; and getting involved locally to ensure the services are meeting your community's needs.

Can I stand?

There are only a few rules to stand for election. You must be:

- A British citizen, or a citizen of the Commonwealth, or the European Union
- 18 years of age or older
- Live in an area that is served by a local council
-

How can I get involved?

Contact Newbold Astbury cum Moreton Parish Council at clerk@astbury-parish.org.uk to find out more or visit www.nalc.gov.uk/elections If you want a nomination paper to stand please contact the elections team at Westfields or the Clerk for advice. The deadline for return nomination papers is 4th April 2023 at 4pm.



POT HOLES!

If you know of any **pot holes** please go to:

fixmystreet.cheshireeast.gov.uk

to report them!

Did you know that you can make a claim against CE for damage from potholes?

Go to: https://www.cheshireeast.gov.uk/highways_and_roads/highways-licences-and-permits/making-a-claim.aspx#:~:text=You%20have%20a%20right%20to,Act%20to%20maintain%20the%20highway



ANNUAL PARISHES MEETING 2023

Newbold Astbury cum Moreton Parish Council will hold its Annual Parishes Meeting on Wednesday 12th. April 2023 at 7.30 pm. in Astbury Village Hall.

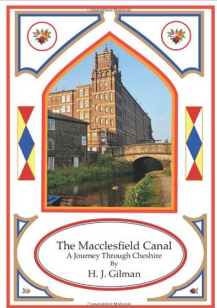
Cheese and Wine will be provided

1. Welcome
2. Minutes of the Annual Parishes Meeting on Wednesday 13th. April 2022
3. Matters arising from the minutes
4. Chair's report
5. Questions from the public

6. PRESENTATION:

An illustrated talk by local amateur historian and raconteur Harold John Gilman about The Macclesfield Canal: A Journey Through Cheshire. Especially the section which runs through our two parishes of Newbold Astbury and Moreton cum Alcumlow.

(Mr Gilman will have copies of his recently updated book on the subject for sale)



Chair's Report 2022

The Parish Council (PC) held 11 meetings in the past 12 months, the majority of which were attended by one of our Ward Councillors, Liz Wardlaw and Patrick Redstone. They both continue supporting the PC in various matters particularly with highways and planning matters. Thanks to both of them.

As mentioned last year the PC are involved in a number of long term projects including the Common Land at Brownlow Heath and the war Memorial.

At the Common Land, following a partial clearance of scrub and nettles last Spring, a new native species hedge was planted, together with a mix of several native trees. Paths have been created using bark chippings, and last Autumn native daffodils and bluebells were planted and native wild flower seeds sown. Work will be on-going for the near future.

More daffodils have been planted along the A34 at the ends of Brownlow Heath Lane and Chance Hall Lane. Sibelco who operate the sand quarry at Wall Hill lent their handyman, John Slack to dig the holes to help with the planting. Our thanks go to them.

After being contacted by a resident at Acker's Crossing the PC organised for an English oak tree to be planted there in the Autumn to commemorate the Queen's Platinum Jubilee. The planting was well attended and it was a pleasure to see so many local residents and councillors on the day.

Work continues to provide evidence to the churchwardens of service personnel who were missed off the existing war memorial in the churchyard. This is a long term project to add their names to the memorial.

The Neighbourhood Plan update is still ongoing. The team held an open meeting at the village hall last April and this was followed by a questionnaire which circulated to parishioners in the autumn, seeking their views. Work continues as we need a new document to replace the current one as a number of our policies have been superseded, and new ones need to be included. This new plan will help to shape the character of the parishes for the next 5 years.

We have welcomed a number of parish residents to our monthly meetings, who have spoken to the council on various matters including highways and planning. Parishioners have also reported issues to us including traffic matters, accidents, potholes and fly tipping. Residents will also have noted that the work to extract sand in the parish has now extended to fields on the opposite side of Wall Hill lane to the original site which will extend the life of the facility.

The PC continue to produce the Newsletter which together with the Website provides information for the parishioners and local groups publicise their activities. We are always happy to receive items for inclusion in the Newsletter

We will be holding our Annual Parishes meeting on Wednesday 12th. April at 7.30 in the village hall. Our speaker will be Harold John Gilman a local amateur historian and former resident of Moreton who has written a number of books including one on the Macclesfield canal. He will be speaking to us regarding the canal focusing on the section which runs through our 2 parishes. Cheese, wine and soft drinks will be served on the night and we hope that as many of you as possible will be able to join us. You will be able to raise any issues or pose questions which we will endeavour to answer.

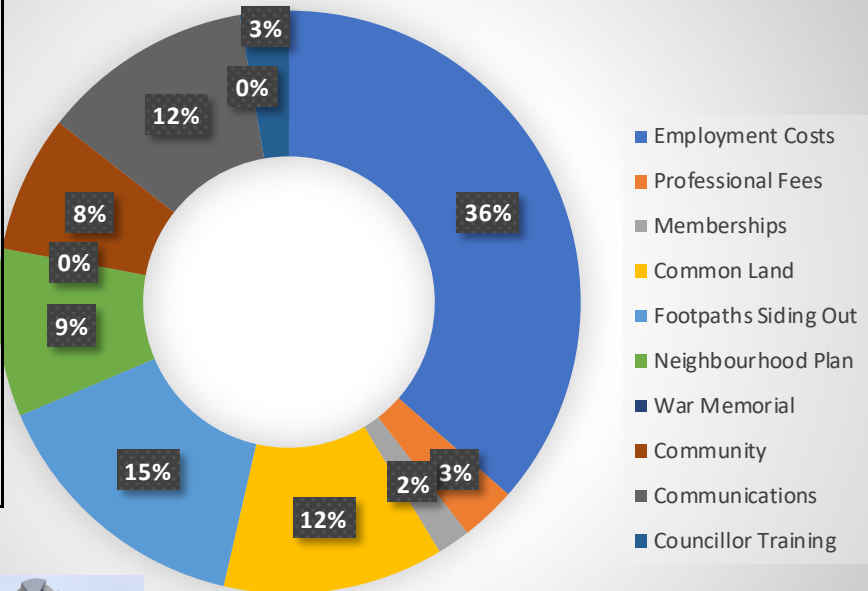
We look forward to seeing you.

Judith Critchlow (Chair NAcM PC)

Expenditure to end February 2023

Employment Costs	£6,109.70
Professional Fees	£516.00
Memberships	£305.88
Common Land	£2,050.00
Footpaths Siding Out	£2,520.00
Neighbourhood Plan	£1,562.00
War Memorial	£0.00
Community	£1,273.26
Communications	£1,964.86
Councillors' Allowances	£0.00
Councillor Training	£455.00
Total	£16,756.70

Expenditure Parish Accounts 2022-2023



Two Post Box toppers provided by the W I to brighten up our days at The Horse Shoe Inn and the Village Green!

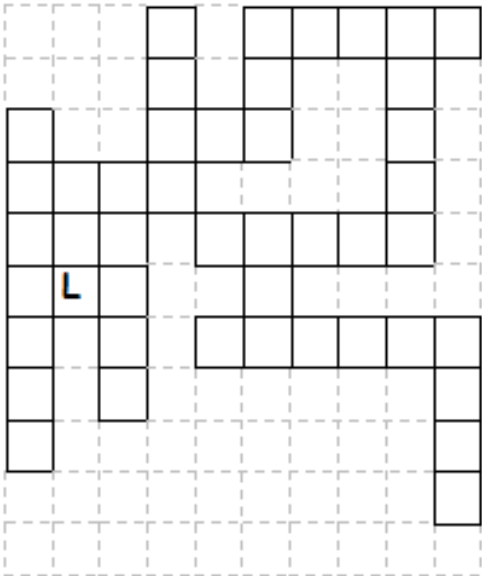
WORDSCRAMBLE

Using the following 7 letters can you fill in all the spaces in the grid. Each letter can only be used once in each separate word. The solution will appear on the website at the end of March.(there may be more than 1 correct solution!)

There are 12 words to fill in.

One letter has been filled in to start you off.

L R A Y L O Y



ASTBURY ROLL OF HONOUR

1914

1918

James PLANT: Harry PLANT. These two soldiers appear to be brothers. **James Henshall Plant** was baptised at Astbury 7/12/1884 and **Harry** was also baptised in Astbury 25/7/1886. In 1891 the family are living in Railway Side, Watery Lane, Newbold Astbury, father Samuel is a wheelwright, born Astbury and mother Ann (nee Boon) Ten years later, on the 1901 census, **James** is still at Railway Cottage with his parents and he is working as a grocers apprentice, meanwhile **Harry** is living virtually next door at Lockett's Tenement as a waggoner and cowman. Going forward 10 years to 1911, **Harry** is located in Stockport being a visitor on the night of the census. He is now a joiner. **James** at this time is still living at Railway Cottage with his now widowed mother and is a farm labourer. He is shortly (23/6/1911) to emigrate to Australia, where in 1916 he signed up to the Australian military, being demobbed in 1920. **James** married and had a family in Australia, passing away 1952. **Harry** is in Stockport in 1921 married with a family. Sadly he passed away just 5 years later in 1926. Unfortunately I haven't been able to find any military paperwork for Harry to confirm his information. Their parents, Samuel and Ann are buried in Astbury Churchyard.

WAR GRATUITY SCHEDULE 5/3/2/37141

AUSTRALIAN MILITARY FORCES.

AUSTRALIAN IMPERIAL FORCE.

Attestation Paper of Persons Enlisted for Service Abroad

No. _____ Name PLANT James Henshall

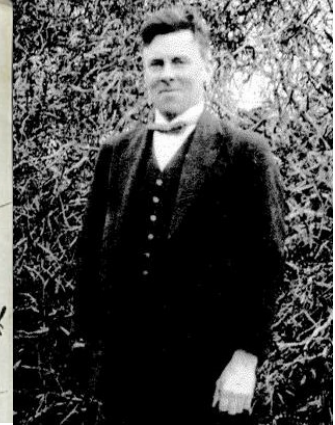
Unit _____

Joined on 31.3.16

Questions to be put to the Person Enlisting before Attestation.

1. What is your Name? ... James Henshall Plant

2. In or near what Parish or Town were you born? ... Newbold Astbury near the Town of Cheshire



George HEATH. Interestingly enough this chap was a contemporary of the 2 guys above as he lived in the same area and was of a similar age, so they probably played together as children and attended school together also. George was born on the 11th. September 1888 to Thomas and Sarah Heath in Congleton. He was baptised at St. Peter's in Congleton on the 17th. October 1888 and shortly afterwards the family must have moved into the parish as in 1891 they are living on Mow Lane, where Thomas is a labourer at the nearby Lime Works. By 1901 the family are living in Newport which is close to The Horse Shoe Inn. Thomas is now a stone miner, underground and George is at school. By 1911 George has moved to Manchester where he is still single, and employed as a motor lorry driver. A month before the outbreak of war George got married in Heaton Mersey. Being patriotic George signed up to the Royal Navy Air Service 1/11/1916 (he was a steam waggon driver at the time) and was moved to the RAF on 1/4/1918. His discharge papers state that he left on 30/4/1920. He settled into married life as a motor waggon driver in Cheadle, Cheshire, by the time the 1921 census was taken. At the outbreak of WW2 he was living with his family in Gatley, now working as a warehouseman at a silk mill. George lived a long life and passed away in 1980 in Stockport. Both of George's parents are buried in Astbury Churchyard.

(if you know anything about any of these men, please contact us, thank you.)

Clerk's email for any correspondence: clerk@astbury-parish.org.uk

Who are we? Please feel free to get in touch

Judith Critchlow(Chair) 01260272174 (M) Carlton Evans(Clerk) 07734808677 Nick Plant(vice chair) 07801545402 (A)

Andy Banks 01260 281194 (A)	Nick Barton 01260 280678 (A)	Peter Cliff 01260 275700 (M)
Phill Critchlow 01260272174 (M)	Barbara Jelf 01477500541 (A)	Ian Parry 07917 050 443 (A)
Rob Lomas 01260 272061 (A)	Nick Plant 07801 545 402 (A)	Nick Sharman 01260 271374 (A)
Roger Sutton 01260 273677 (A)	John Ward 07788418264 (A)	Megan Bailey 01260 641292 (M)

(A) - Newbold Astbury Ward (M) - Moreton cum Alcumlow Ward

We meet in Astbury Village Hall on the 2nd. Wednesday of every month at 7.30 pm. Please feel free to come along.

Next Meetings: Please check the website.

If you have an item for the next newsletter, any comments, or you would like to sponsor the mailing costs in return for including a leaflet, contact Phill Critchlow. (phill.critchlow@astbury-parish.org.uk)