

# NEWBOLD ASTBURY CUM MORETO

PARISHES NEWSLETTER DECEMBER 2021

Website: <http://astbury-parish.org.uk>



The Parish Council would like to wish everyone a

Safe and Merry Christmas and a Healthy and Happy New Year!

## ASTBURY LIVE NATIVITY - 2021

MONDAY 20TH DECEMBER  
TUESDAY 21ST DECEMBER

GATHER AT 6:00PM AT  
GLEBE FARM  
FOR A 6:30PM START

DRESS WARMLY, AND BRING A TORCH

### Welcome to the Astbury Live Nativity

Growing in popularity every year, the live nativity portrays the true meaning of Christmas. For many it has become a highlight of their Christmas celebrations as we follow Mary and Joseph's journey to Bethlehem.

Our journey begins at the farm where we will be greeted by the Centurion who orders the people to go to Bethlehem. We make our way to the barn where we will meet the Shepherds before heading down the farm drive where we will meet the heavenly host and the Angel Gabriel.

Crossing over the road to the Egerton Arms where we will encounter the grumpy Innkeeper telling us there is no room at the Inn.

We cross the road finishing in the beautiful Astbury Church to find Mary, Joseph and the baby Jesus.

Finally we witness the arrival of the Three Wise Men bearing their gifts.

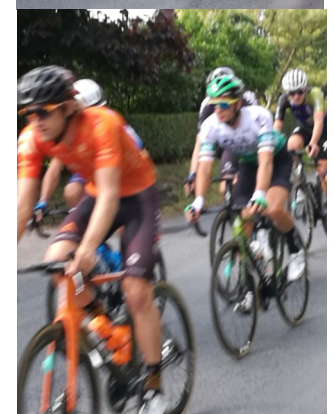
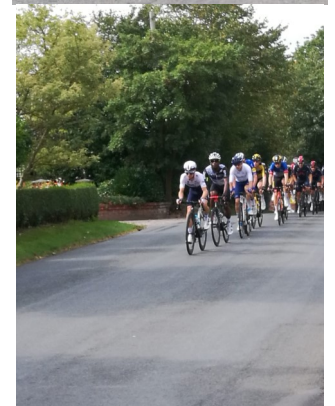
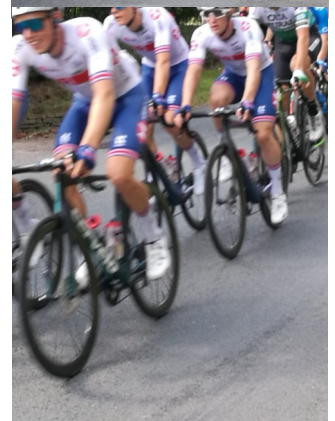
The evening concludes with communal carol singing followed by refreshments.

Tickets from Glebe Farm Information Point (Marks Events Plant Area & Santa's Grotto) & Glebe Farm Shop, or call Mark on 07722 008421

Adults £5.00 Children £2.50 Family £12.00  
(2 Adults, 3 Children)

Includes Mulled Wine, Hot Chocolate and Mince Pies.

Tour of Britain  
9/9/2021 which passed  
through Brownlow and  
Astbury.



Parish and Ward councillors daffodil planting along Brownlow Heath Lane 23/10/2021. Bulbs were also planted along Wall Hill Lane. Suggestions for other areas for bulb planting next year would be welcome.





# Astbury Church News



Sun 28th November	6.30pm	Advent Carol Service	
Sat 4th December retiring collection	7.30pm	Christmas Concert	Return of Nantwich Singers with 'Welcome Yule' No booking required,
Sun 12th December	2.30pm	Carol Service at Somerford Chapel	Weather permitting
Sun 19th December	6.30pm	Carols by Candlelight	Traditional carols and readings with the choir
Mon 20th December Shop	6.00 for 6.30pm Starts from Glebe Farm;	Astbury Live Nativity mulled wine and mince pies at the end to warm us up.	Prebooking essential - tickets from Glebe Farm
Tues 21st December Shop	6.00 for 6.30pm Starts from Glebe Farm;	Astbury Live Nativity mulled wine and mince pies at the end to warm us up.	Prebooking essential - tickets from Glebe farm
Christmas Eve	5.30pm	Crib service	Especially for children, come dressed as a nativity character or bring one of your own crib figures
	11.30pm	First Communion of Christmas	Live streamed and recorded, Common Worship service with carols and choir
Christmas Day	8.00am	Holy Communion	Book of Common Prayer service
	10.00am	Family Christmas	Live-streamed and recorded, short, fun and especially suitable for children, bring a Christmas present to show us
Boxing Day 26th	8am	Morning Prayer	Book of Common Prayer Service

Except for the Live Nativity, booking for any of our services will not be required this year. All arrangements are of course subject to any changes in COVID regulations. For more details about which will be the right service for you and your family please see our website [astburychurch.org.uk](http://astburychurch.org.uk)

## NEWS FROM THE PARISH COUNCIL

### Fly Tipping

There seems to have been an increase in the frequency of fly tipping around the Parishes. Please report anything you see to the Clerk. Thank you.

### Common Land at Brownlow Heath

Your Parish Council is progressing plans to better manage the common land next to the Bridleway on Sandy Lane. This land has become overgrown and inaccessible over the years. The aim is to enhance its biodiversity thus encouraging wildlife while also allowing access to the space via meandering woodchip paths for local walkers.

In response to local concerns, a low removable fence will be installed in the Spring of 2022 which will enable access for work on the land, while also deterring unwanted vehicular access. Extra trees will be added to increase carbon capture, as will hedge saplings along the internal boundary. Gaps in the fencing will enable walkers to follow meandering paths to enjoy the mix of woodland and open areas. We will endeavour to protect some of the stands of comfrey which are a feature here, and other elements which encourage pollination, while addressing the need to enhance the mixture of wildflowers and plants. Some reduction of nettles and brambles is essential to clear a way for people to move. An application for funding towards the cost of the work will be made to the William Dean Trust. Any suggestions or comments are welcome.

### Have your say! Respond to Cheshire's East Consultation on Community governance by 28 November. What do they suggest might happen to YOUR Parish Council?

Cheshire East has proposed that Newbold Astbury parish councillor numbers are reduced from 13 to 8, and that there is no longer a warding arrangement for Moreton. This is an effort to equalise representation across the council's areas. As you know, councillors are voluntary and unpaid. The reduction in numbers would reduce our capacity to act and respond to the many calls on councils. It presents problems of accountability and continuity. The Parish Council agreed to object to this proposal at its meeting on 13/10/21 and to object to Moreton being subsumed into Astbury. We felt this would reduce representation across the breadth of the parish, and the impact of the rural voice.

Cheshire East wants responses from anyone who is concerned. It says there are unlikely to be extensive change but all options are being considered. Some Parish Councils are facing extinction or fundamental restructuring. These changes should be agreed by an order in council in May 2022, so that the Electoral Register can be updated, with a view to Council Tax bills and elections in April and May 2023. The timetable is tight. Make your voice heard by filling in the CE Community Governance Consultation online - paper copies are available from the Library.

### Neighbourhood Plan

The Astbury & Moreton Neighbourhood Plan was formally adopted by Cheshire East Council as the Planning Policy of the Parishes on the 17<sup>th</sup> August 2017 following a Referendum. After 5 years the Plan is now eligible for review and updating with implementation in September 2022.

The Parish Council has set up a Working Group based on those Councillors and Residents who prepared the initial Plan, to evaluate the existing Policies under the following categories:-

Effectiveness/ National Regulation and Policy/Local Policy/Local circumstances and evidence/local opinion.

Any Residents who would like to be involved or contribute to this process are invited to contact Cllr. Nick Sharman.

## Astbury School News

Children at Astbury School have had such a busy start to this new school year. Learning to use an aerial map and locate local landmarks, children in Class Noah found so many places in Astbury that they see on their journey to school.

They also found lots of places that they love to visit as they learn about the beautiful village location of their school.

Danielle and Logan were elected by their peers to their roles of Head Girl and Head Boy - being in Y6 at Astbury School offers opportunity for additional responsibility and leadership as children flourish and continue on their great adventure of life.

As we enjoyed some of the Autumn sunshine, children in Class Jacob entertained parents with a rock performance of 'Livin' on a prayer'. The other children rocked along with their air guitars!

The whole school set up camp on the Village Hall car park and waited in anticipation for the Tour of Britain to come past. Team Astbury had lots of fun waving their flags, shouting and cheering as the riders passed by.

May Day in September was an amazing celebration. May Queen Katie and the first ever King of Newbold Astbury, Rufus celebrated in style! It was so wonderful to be part of the Astbury community - keeping the traditions alive and having so much fun!

To find out more information about our school, visit [www.astburyschool.org.uk](http://www.astburyschool.org.uk) and follow us on facebook <https://www.facebook.com/astburyschool>



## Astbury W I News

November is always a busy month for our WI as it begins with our Annual General Meeting on the first Wednesday of the month, but this November has been particularly busy and rewarding and we are only

half way through the month. Already, some of us have enjoyed afternoon tea, taken part in producing our cascade of poppies for Remembrance at St Mary's Church Astbury and done our own "fun photoshoot" with our knitted and crocheted scarves on the village green, as proof that we have achieved the Cheshire Challenge.

The AGM was held in the village hall with over 40 members enjoying a pea and pie supper provided by Jill Millard. The meeting began with Jerusalem and a minute's silence for Margaret McLeavy who will be much missed by all her friends in WI and on the bowling team. We then sat down at 7.30 to some lovely food

and plenty of chat. After we had eaten the business of the evening began. President Margaret was unusually silent as she was suffering from laryngitis, so was forced to delegate a lot of the agenda to Secretary Liz and ask other members of the team to contribute. The success of the evening was very much down to the way our WI functions, fostering friendship, fun and teamwork. Often food is included in that particular formula for success!

Gwen Williams was thanked for the beautiful, bright yellow roses she had provided for the President's table. Birthday buttonholes made by Cath Cunliffe were distributed to members celebrating this month. Catherine updated us on planned events within the Dane Valley Group in which our members can take part if they wish to.

The Knit and Natter group reported that their drape of poppies was almost complete and would be erected in church on Friday. Members were also knitting and crocheting scarves, and squares to be made into blankets for the homeless. Some members were also signed up to a crafting workshop (needle felting) this month and a wreath making session organised by CFWI later in the month.

The walkers reported ongoing activity and some of our strollers were looking forward to a stroll in the park, followed by afternoon tea at Courtyard Kitchen, Macclesfield. Members had also enjoyed the CFWI walk of Chester's historic walls. A local walk along the canal is also planned for later in the month.

Members were reminded that there was lots to look forward to including our next meeting when returning member Jan Hardie Woolridge will demonstrate carol themed flower arrangements and we shall be holding a silent auction for Elaine's wonderful, knitted Santa, Mrs Claus and a delightful Scottish piper for the New Year. Though we felt that was not possible to organise a WI Christmas party this year since resuming our normal meetings we look forward to a Knit and Natter lunch at The Bluebell on 13<sup>th</sup> December, when members can join the group for lunch should they wish to do so. A Winter Lunch is also planned early in the New Year.

Cups were presented to our bowlers, who had enjoyed fun and friendship in a foreshortened season this year. The Betty Wainwright Rose-bowl was presented to our singles winner, Anita Thompson, Carole Goodwin and Elaine Hancock were the winners of the doubles competition and Margaret Pennington won the novice's trophy.

Lisa invited members to join her for a coffee afternoon, in memory of her Mum, Margaret Beecroft who sadly died in 2020. The event (Held at United Reform Church was a fundraiser for East Cheshire Hospice and was well attended by our members. Lisa felt that her Mum would have loved it.

During the subsequent AGM business of the meeting, Treasurer Lisa gave a summary of the Financial Statement. She reported a healthy balance despite lots of outgoings and the fact we had been able to waive our portion of subscriptions in response to the pandemic. This has meant that we have had little or no income for the time we had been unable to meet in person. Liz shared our Annual Report covering all our activities since lockdown. She recalled the way we had kept in touch during that time. Vice President Kath, kindly read Margaret's President's Address on her behalf. She passed on Margaret's thanks to all committee members for their support during this strange and isolated period of time. Margaret was so grateful for the way officers and committee members had kept in touch and formed an effective support network for each other and members during the lockdowns. She thanked Christine Brooks, who feels she must retire from Committee. Margaret presented Christine with flowers and the Committee hope to say a further thank you for the many years Christine (a past treasurer) has served on the Committee. Plants were presented to Officers who had worked particularly hard during difficult times keeping the WI at Astbury together. Kath presented Margaret with a lovely bouquet to say thank you for her hard work too. All other committee members were willing to stand and Margaret was re-elected as President for a further year.

Since the meeting the poppies have been installed in Church, and the Cheshire Challenge completed. The reaction of The Rector and worshippers has been wonderfully positive and we hope that for years to come, our drape will continue in future years to be a tribute to those who have given their lives in conflict during two world wars and beyond.





### Our WI Poppies

Our poppies are a symbol of those who died in war.  
 We cannot bear to contemplate the horror that they saw.  
 For us, they fought so bravely in many a distant land,  
 Their sacrifice we can't forget, but we can understand,  
 The loss felt by their loved ones who mourned them in their youth,  
 For those who were just missing and never learned the truth.  
 They say that war is futile, but as it rages on.  
 There's still a loving mother deprived of her son.  
 For all those loving mothers whose sons lost their lives,  
 Who left behind young families and devastated wives.  
 Red petals fall again each year in the Royal Albert Hall,  
 To remind us of those young lads who heard their maker's call.  
 So we rose to the challenge and crafted poppies red,  
 The black of their centres for those who mourn their dead.  
 We knitted and we crocheted, our needles really flew.  
 For those that we remember and some we never knew.  
 There's poppies crafted out of felt, which to our tribute add,  
 To recognise the sadness of a soldier's Mum or Dad.  
 We owe a debt of gratitude to all who count the cost,  
 Of those involved in conflicts and all whose lives were lost.

By Margaret Pearson



**John TURNOCK.** I can't find any military records for John at present, but I think he was the son of John and Mary Turnock (nee Jepson) who married at Buglawton in 1893, he was baptised on the 19th. May 1898 at St. James' church in Congleton, the family living on Sandbach Road. In 1901 the family had relocated to Astbury village where John was at home, aged 2, his father a farm labourer. By 1911, when he was at school and aged 12, the family were still in the village, his father now described as an agricultural labourer. In 1939 he is living with two of his siblings and his aged mother, at Norfolk Farm, Lapwing Lane, Lower Withington, where he is a mixed farmer. He died on 11/6/1972 in Chelford.

**Joseph Turnock.** This soldier does not seem to have any surviving military paperwork either. He was born at Astbury Marsh on the 25th. Of April 1898 and baptised at Astbury Church on 5/6/1898, the second child of Joseph and Edith Turnock (nee Gibson) who had married in Congleton in 1895. On the 1901 census, the family are living at Bay Tree Farm, Newbold Astbury, where he is 2 years old and his father is a farm bailiff. Ten years later the family have moved to Gorse lane, where Joseph now 12 is still at school and his father is now described as a quarryman. The next record is from the 1939 register where he is living in Samuel Street in Crewe as a joiner with his wife Winifred, whom he had married in 1919 in the Sleaford area of Lincolnshire.

He died in the Congleton area on 11/11/1978.

**If you have any information regarding either of these soldiers please contact the clerk or Councillor Phill Critchlow. Thank you.**

Clerks email for any correspondence: [clerk@astbury-parish.org.uk](mailto:clerk@astbury-parish.org.uk)

### Who are we? Please feel free to get in touch

**Judith Critchlow (Chair)** 01260 272174 (M)    **Carlton Evans (Clerk)** 01260 641854    **Nick Plant (vice chair)** 07801 545402 (A)

Andy Banks 01260 281194 (A)    Nick Barton 01260 280678 (A)    Peter Cliff 01260 275700 (M)

Phill Critchlow 01260272174 (M)    Barbara Jelf 01477500541 (A)    Ian Parry 07917 050 443 (A)

Rob Lomas 01260 272061 (A)    Nick Plant 07801 545 402 (A)    Nick Sharman 01260 271374 (A)

Roger Sutton 01260 273677 (A)    John Ward 07788418264 (A)    Megan Bailey 01260 641292 (M)

(A) - Newbold Astbury Ward

(M) - Moreton cum Alcumlow Ward

We meet in Astbury Village Hall on the 2nd. Wednesday of every month at 7.30 pm. Please feel free to come along.

**Next Meetings: Please check the website.**

If you have an item for the next newsletter, any comments, or you would like to sponsor the mailing costs in return for including a leaflet, contact Phill Critchlow. ([phill.critchlow@astbury-parish.org.uk](mailto:phill.critchlow@astbury-parish.org.uk))